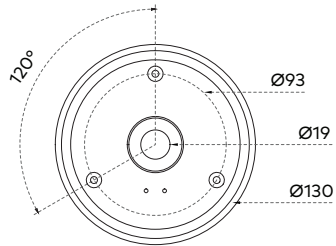
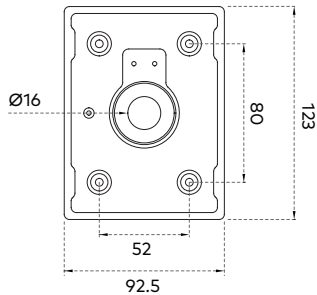


## Mounting Plate

ATSM0038



ATF10038  
ATF20038



All measurements are in millimetres.

## Driver Compatibility

Product Code	Output Power	Driving Current	Forward Voltage
ATSM0038	38W	1000mA	27-40V
ATF10038	38W	1000mA	27-40V
ATF20038	38W	1000mA	27-40V

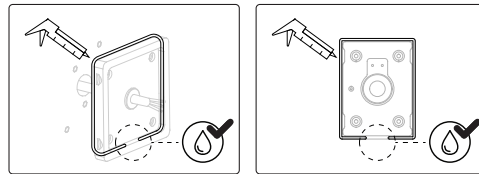
## Dimming

This luminaire can be dimmed. Unios® recommends a phase-cut dimmer or DALI solution optimised for LED technology.

For full list of compatible drivers, see [unios.com](https://unios.com)

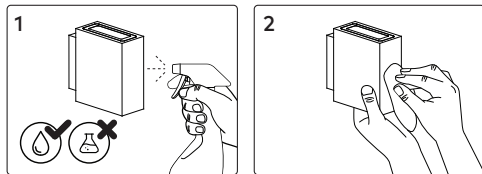
## IP65/66 Installations

To ensure a complete seal around the mounting area, an exterior grade caulk must be used around the perimeter of the back of the mounting plate. **Do not caulk bottom of mounting plate to ensure sufficient drainage.**



## Cleaning

Warning: Before cleaning, disconnect from mains supply and allow luminaire to cool.



## Disposal

Ensure correct disposal of this product (waste electrical and electronic equipment).



## Corrosion Protection

It is important to note that care must be taken during installation or maintenance to ensure that the surface of the luminaire is not damaged. Any damage, which is exposed to moisture will result in corrosion occurring.

Please also note that any chemical applications on the luminaire or chemical contact via installation will cause corrosion of the surface of the luminaire and will void the warranty.

## Ambient Conditions

Recommended to install in an ambient temperature <35°C.



## Athena Max

SERIES

Base Codes	Surface Mounted ATSM0038	Fixed One ATF10038	Fixed Two ATF20038	Power 38 Watts
Class I 220-240V ~ 50/60Hz	IP Rating 66	Material Aluminium	Install Person/s 1x	

**CAUTION – This product must be installed by a qualified installer**  
Please read instruction manual carefully before installing luminaire

**Surge Protection**  
For comprehensive protection of a luminaire against electrical surges, surge protection shall be installed on the mains supply where required to protect luminaires and drivers from transient voltage damage.

### For warranty information visit [unios.com/warranty](https://unios.com/warranty)

Please read these installation instructions carefully before installing this product. This product must be installed and maintained by a suitably qualified person/s in compliance with the latest applicable regulations and relevant legislation.

Unios does not warrant any claim based on defects or damage caused by misuse, improper installation, improper operation and/or modifications carried out by the purchaser or third parties. This product shall not be used as a 'working light' during construction. This will result in the warranty of the product to be void. For warranty duration, please refer to the data sheet.

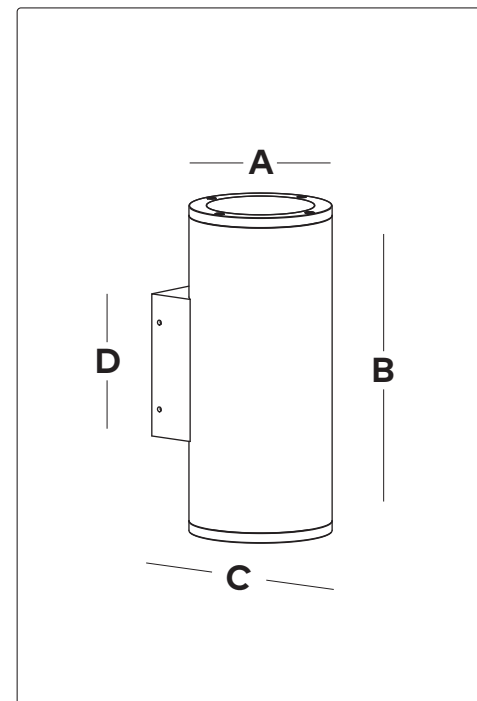
## Sizing Variations

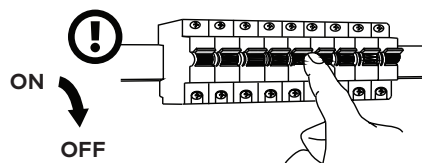
Product Code	A	B	C	D
ATSM0038	Ø130	250	-	-
ATF10038	Ø130	250	151	131
ATF20038	Ø130	300	151	131

All measurements are in millimetres.

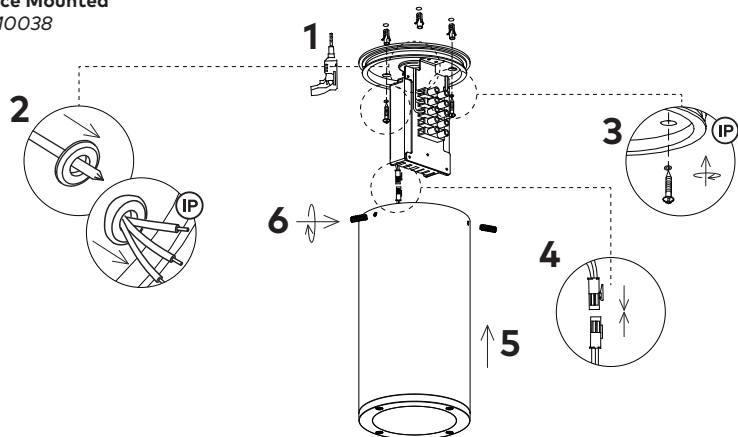
## Parts & Accessories

 1x Allen Key	 Plugs ATSM (3x) ATF1/ATF2 (4x)	 Screws ATSM (3x) ATF1/ATF2 (4x)
 Seal Washers ATSM (3x) ATF1/ATF2 (4x)	 Catenary Accessory ATCA01 Suited for ATSM	

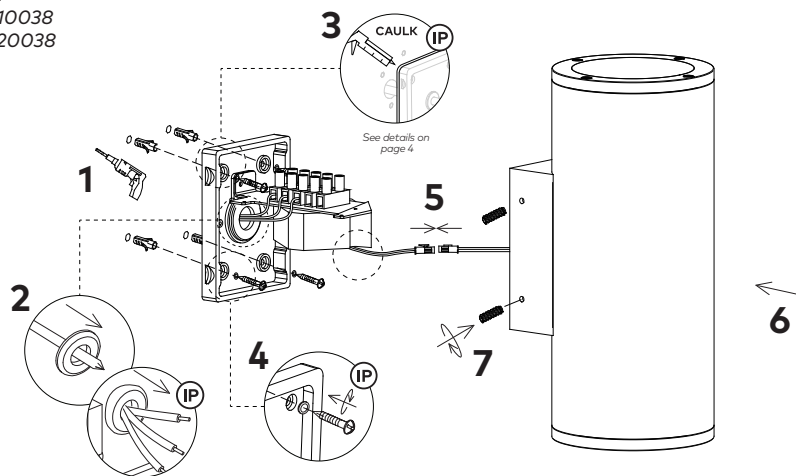




### Surface Mounted ATSM0038

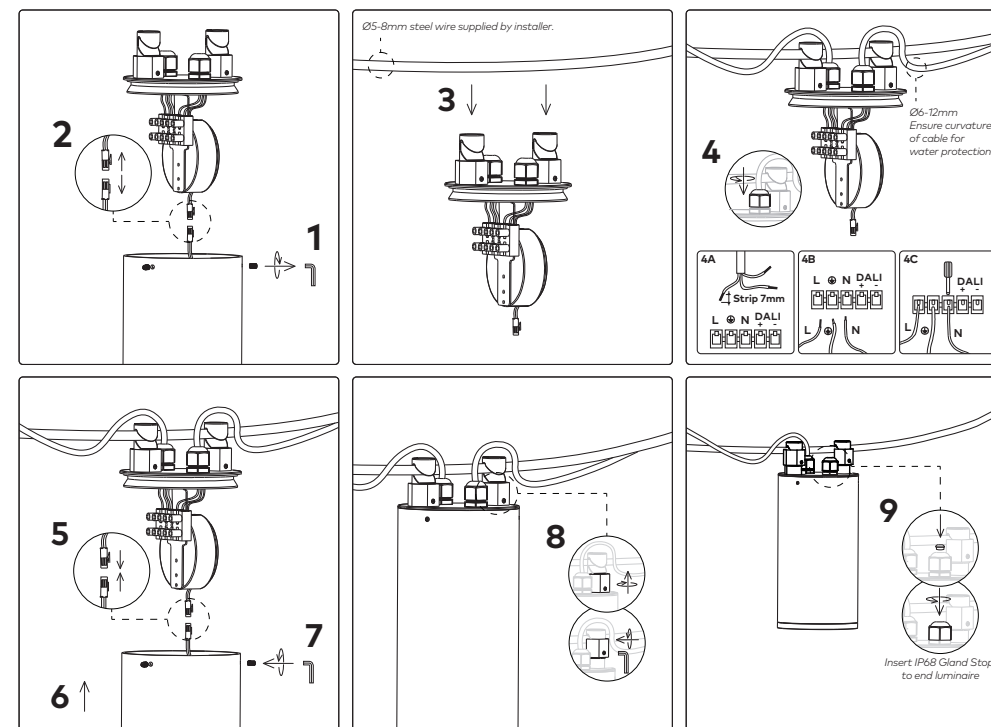


### Wall ATF10038 ATF20038



## Catenary Accessory Installation

Catenary accessory (ATCA01) supplied separately.



## Wiring

## Wiring (Built-in DALI)

