



Surge Protection

For comprehensive protection of a luminaire against electrical surges, surge protection shall be installed on the mains supply where required to protect luminaires and drivers from transient voltage damage.

For warranty information visit unios.com/warranty

Please read these installation instructions carefully before installing this luminaire. This product must be installed and maintained by a suitably qualified person/s in compliance with the latest applicable regulations and relevant legislation.

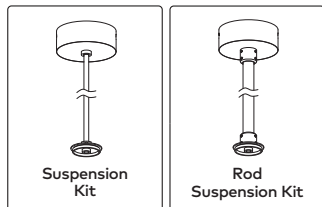
Unios does not warrant any claim based on defects or damage caused by misuse, improper installation, improper operation and/or modifications carried out by the purchaser or third parties. This luminaire will not be used as a 'Working light' during construction. This will result in the warranty of the luminaire to be void. For warranty duration, please refer to the data sheet.

Corrosion Protection

It is important to note that care must be taken during installation or maintenance to ensure that the surface of the luminaire is not damaged. Any damage, which is exposed to moisture will result in corrosion occurring.

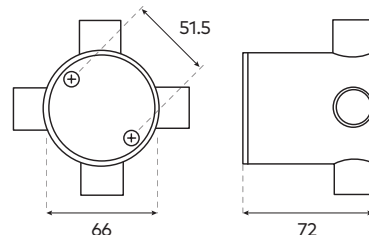
Please also note that any chemical applications on the luminaire or chemical contact via installation or maintenance will cause corrosion of the surface of the luminaire and will void the warranty.

Additional Accessories



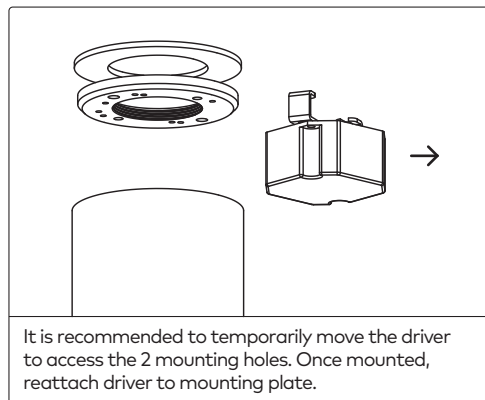
Junction Box Mounting

240D Series Standard Deep Junction Boxes



All measurements are in millimetres.

Ion R SM Canisters have been designed to be compatible with Clipsal 240D Series Deep Junction Boxes (Does not apply with IORSN300).



It is recommended to temporarily move the driver to access the 2 mounting holes. Once mounted, reattach driver to mounting plate.



Downlight Suspension Kit
Installation Instructions

unios.com/downlightsuspensionims

ION R

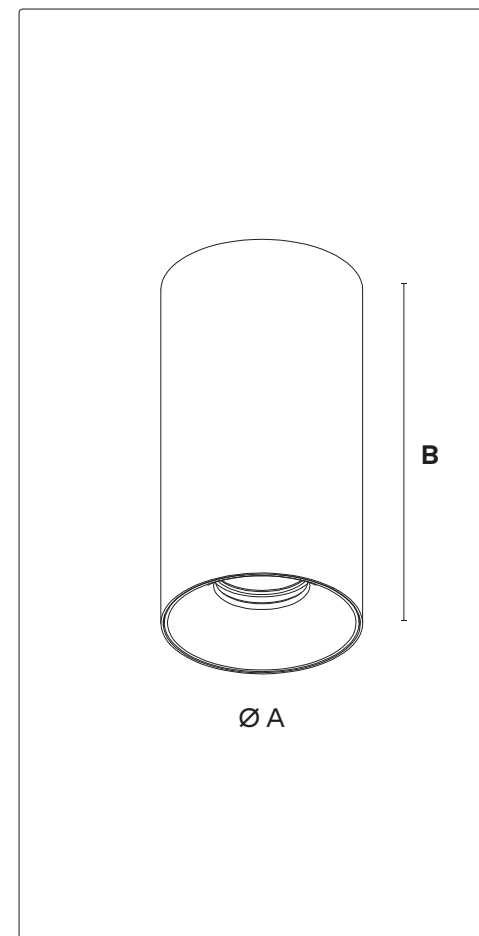
SURFACE MOUNTED DOWNLIGHT

Engine Codes	Mini IONRA060	Small IONR0089	Medium IONR103	Large IONR0180	XL IONR0225	IP44	
Canister Codes	Mini IORSN300	Small IORSS105, IORSS145		Medium IORMS170	Large IORSL170	XL IORSX170	Power 11-43 Watts
Class I 220-240V ~ 50/60Hz		Class III (IORSS105) Luminaire only		Material Aluminium	Operating Temp <35°C	Install Person/s 1x	

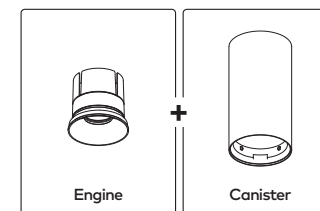


CAUTION – This product must be installed by a qualified installer

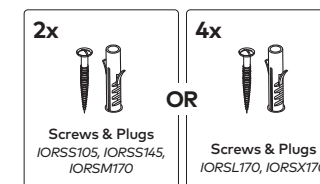
Please read instruction manual carefully before installing luminaire



Required Components



Parts



Sizing Variations

Product Code	A	B
IORSN300	Ø 54	300
IORSS105	Ø 77	105
IORSS145	Ø 77	145
IORMS170	Ø 90	170
IORSL170	Ø 161	170
IORSX170	Ø 207	190

All measurements are in millimetres.



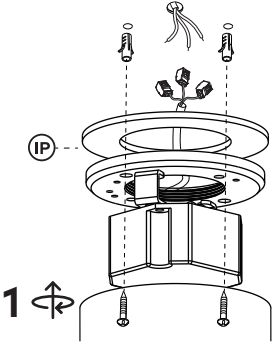
CAUTION



Switch off main electrical power prior to installing and powering this luminaire.

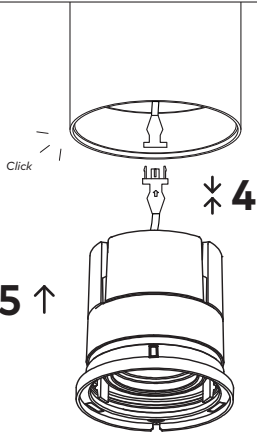
Do not open luminaire whilst the main electrical power is active.

Note: IORSS105 does not include driver

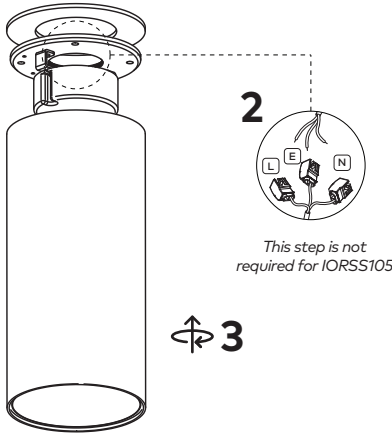
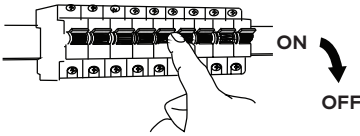


Refer to Canister Mounting Plate section on page 3 for measurements

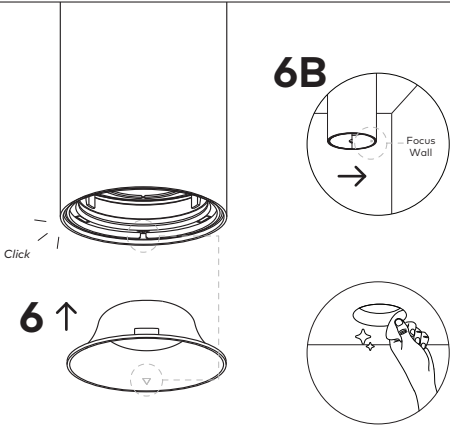
Detach backplate from canister and install bracket to surface using supplied screws and IP seal



Connect luminaire to driver, insert engine into canister and click into place

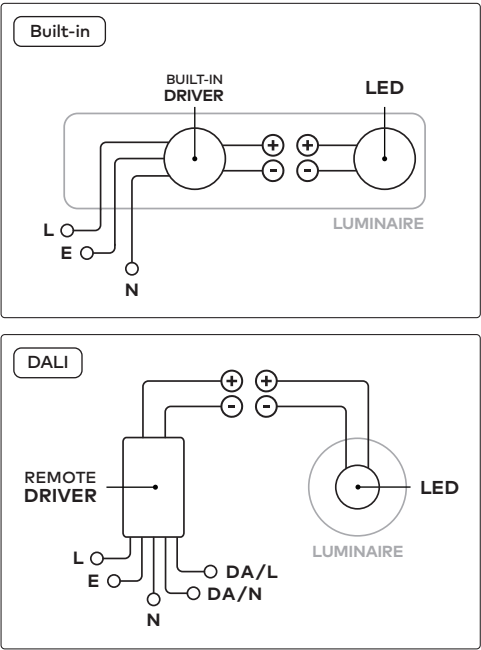


Connect L-E-N to quick connectors and screw canister on to mounting bracket



Align arrows on canister and trim, and click into place. For Stealth Metallic baffle, clean with a cloth once installed
6B: Ensure arrow points to wall for wallwashers

Wiring



Remote DALI wiring for IORSS105 and IORSS145 only

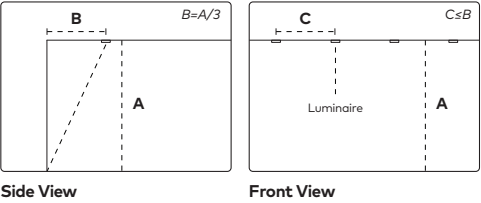
Dimming

This luminaire can be dimmed. Unios® recommends a phase-cut dimmer or DALI solution optimised for LED technology.

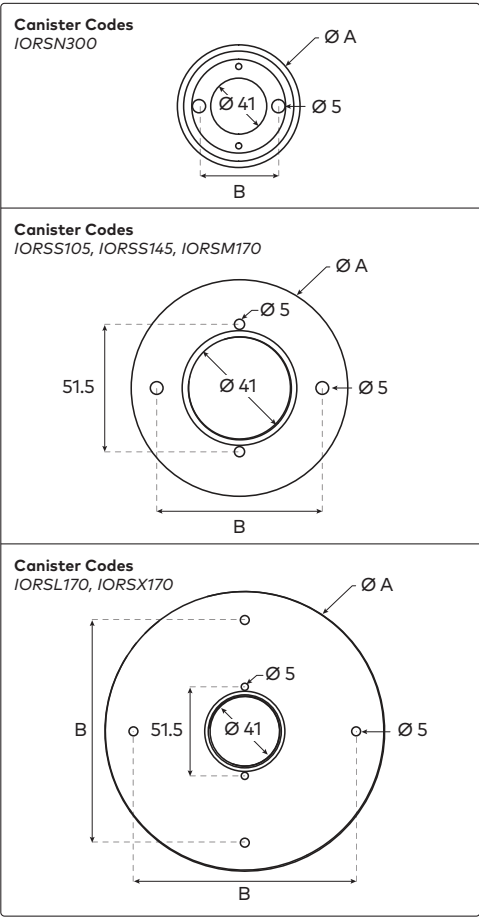
For full list of compatible drivers, see unios.com

Spacing Recommendation

Applies for wallwasher models intended for wallwashing.
For more details see unios.com/wallwasherspacingguide.



Canister Mounting Plate



Product Code	A	B
IORSN300	54	33
IORSS105	72	56
IORSS145	72	56
IORSM170	85	65
IORSL170	157	125
IORSX170	202	170

All measurements are in millimetres.

